

HARDWARE/HAND TOOLS



MAGNETIC FLOOR SWEEPER WITH RELEASE features 24" sweeping width and a sturdy, 48" handle. Clear collected debris by pulling back on the release handle. Clear walkways, factory aisles, loading docks and more. Picks up 6 pounds of 8-penny nails, or approximately 600 pieces. Incredibly strong and well built, yet very affordable.

A 24" Magnetic Sweeper with Release Handle **Part No. MFSM24R**

Magnetic sweepers are great for clearing walkways in warehouses, garages and construction sites.

MAGNETIC FLOOR SWEEPERS These durable sweepers are well built and incredibly strong! Available in 12", 24" and 36" sweeping widths with powerful magnetism. A sturdy steel handle attaches easily. Your customers buy our sweepers to reduce the possibility of costly flat tires or personal injury.

B 12" Sweeper picks up 3.2 lbs. of 8-penny nails, or approximately 290 pieces. **Part No. MFSM12**

C 24" Sweeper picks up 7.5 lbs. of 8-penny nails, or approximately 680 pieces. **Part No. MFSM24**

D 36" Sweeper picks up 11.8 lbs. of 8-penny nails, or approximately 1,070 pieces. Includes 2 attached eyebolts for hanging from forklift or vehicle . . . **Part No. MFSM36**

MAGNETIC MINI SWEEPER for home and small shop use. Picks up nails, screws, paper clips, tacks and other small ferrous metal objects. Lightweight aluminum housing is durable and easily cleared of debris with shop towel or glove.

E Mini Sweeper Display, 12 pcs... **Part No. 07263DSP**

F Mini Sweeper **Part No. 07263**

MAGNETIC PICK-UP PAL™ contains neodymium, the most powerful magnetic material in the world. Prevents costly tire repairs and personal injury. Pick up nails, nuts, bolts, screws and scrap metal with a pull of up to 65 lbs. 35" handle reaches under vehicles, workbenches, tables, desks and more.

G Pick-Up Pal™ Display, 12 pcs.. . **Part No. 07247DSP**

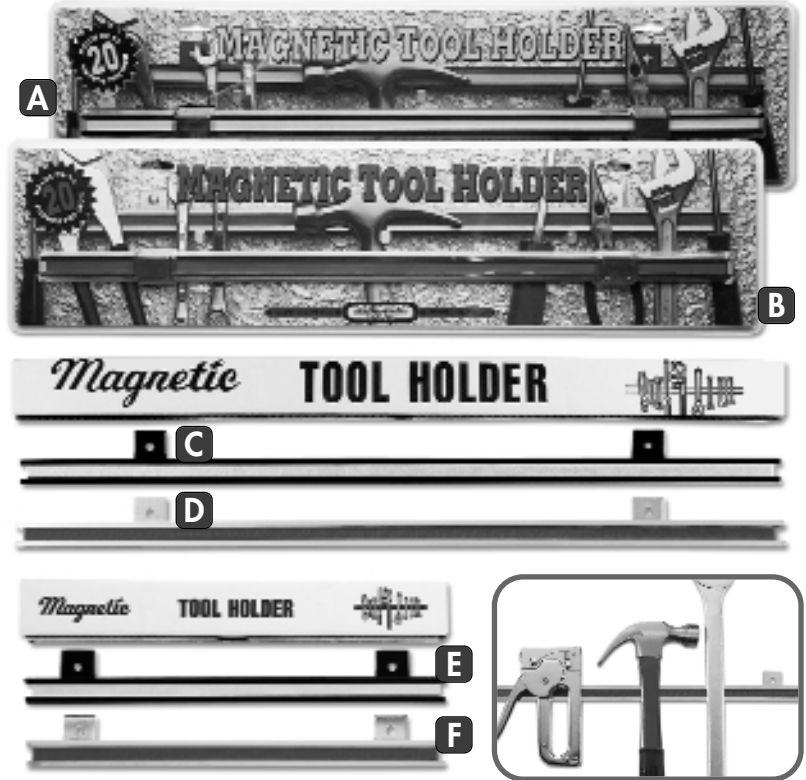
H Pick-Up Pal™. **Part No. 07247**

HARDWARE/HAND TOOLS

Magnetic tool holders organize workshops, garages, commercial kitchens, utility vehicles and more.

POWERFUL MAGNETIC TOOL HOLDERS have up to 20 lbs. of pull per inch. Our powerful tool holders are nickel plated with a red stripe (AMC series) or black finish with a yellow stripe (AM series) and mount easily to walls, workbenches or toolboxes. Mounting screws are included for 1/4" mounting holes.

- A** 24" Black Tool Holder with yellow stripe and two mounting holes, clamshell packaging . . . **Part No. 07261**
- B** 24" Nickel-Plated Tool Holder with red stripe and two mounting holes, clamshell packaging . . . **Part No. 07262**
- C** 24" Black Tool Holder with yellow stripe and two mounting holes, 16" apart **Part No. AM-1PR**
- D** 24" Nickel-Plated Tool Holder with red stripe and two mounting holes, 16" apart **Part No. AMC-24PR**
- E** 13" Black Tool Holder with yellow stripe and two mounting holes, 10" apart **Part No. AM-2PR**
- F** 13" Nickel-Plated Tool Holder with red stripe and two mounting holes, 10" apart **Part No. AMC-13PR**



Powerful handle magnets are helpful for moving metal shelves, sheeting, drain gutters and more.

POWERFUL HANDLE MAGNETS clean up scattered iron objects, including screws, nuts and bolts. Can be used to lift heavy metal objects, such as shelving, beams and doors. These handle magnets lift up to 100 times their own weight!

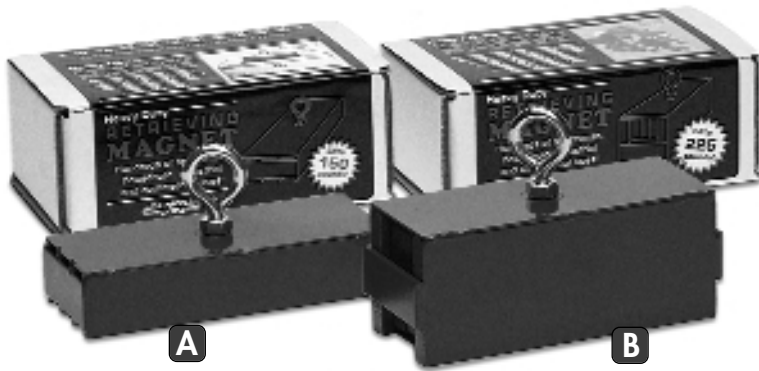
- G** Handle Magnet lifts up to 100 lbs. . **Part No. 07214**
- H** Handle Magnet lifts up to 50 lbs. . . **Part No. 07213**
- I** Handle Magnet lifts up to 25 lbs. . . **Part No. 07212**
- J** Handle Magnet lifts up to 150 lbs. . **Part No. 07210**
- K** Handle Magnet lifts up to 225 lbs. . **Part No. 07211**



COW MAGNETS are useful in the prevention of Hardware Disease in cattle. Also handy for science experiments. For more information on cow magnets, see our website!

- L** Ru-Master 5™ Cow Magnet **Part No. 07238**
- M** Alnico Cow Pills, 2 pcs. **Part No. 07239**

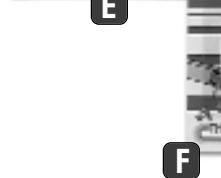
HARDWARE/HAND TOOLS



Your customers can attach a rope to these holding and retrieving magnets to recover tools, scrap metal, auto parts and more.

HOLDING AND RETRIEVING MAGNETS

Customers can hold and position spray nozzles, hoses, temporary wiring and more. Great for retrieving hand tools and other metal items from waterways. Attach a rope or rod to magnet's eyebolt for retrieving. Hundreds of sporting, household, industrial and commercial uses.



A Heavy Duty Retrieving Magnet, eyebolt and nuts included, lifts up to 150 lbs. **Part No. 07208**

B Heavy Duty Retrieving Magnet, eyebolt and nuts included, lifts up to 225 lbs. **Part No. 07209**

C Heavy Duty Magnetic Base, eyebolt and nuts included, lifts up to 40 lbs. **Part No. 07206**

D Heavy Duty Magnetic Base, eyebolt and nuts included, lifts up to 100 lbs. **Part No. 07207**

E Ceramic Magnet Assembly, eyebolt and nuts included, lifts up to 50 lbs. **Part No. 07205**

F Ceramic Magnet Assembly, lifts up to 18 lbs. **Part No. 07204**

G Ceramic Magnet Assembly, lifts up to 5 lbs. **Part No. 07203**

Permanent magnetism is guaranteed on every magnet we sell!

SUPER LATCH MAGNETS lift, hold and retrieve metal objects up to 100 times their own weight! Use as small tool holders, door stops, magnetic clamps and paint fixtures, or separate magnetic from non-magnetic materials.

H Super Latch Magnet, lifts up to 20 lbs. **Part No. 07200**

I Super Latch Magnet, lifts up to 50 lbs. **Part No. 07201**

J Super Latch Magnet, lifts up to 100 lbs. Eyebolt and nuts included. **Part No. 07202**

NOTE: All magnets are tested using 1/4" ground steel plate. The entire magnetic surface is used during tests. If the item you wish to lift is thinner than 1/4", is not ground flat, or does not cover the entire magnetic surface, the actual holding capacity could be much lower. Painted surfaces also tend to reduce tested strengths.

MAGNETIC BASES AND LATCHES Add a hook or knob, and these magnets are perfect for holding and positioning shop lights, tools, plants and more to steel surfaces. Latch magnets can secure a garden gate or shed door.

A Latch Magnet, 7 lbs. pull, 2 pcs. . . . **Part No. 07220**

B Round Base Magnets, 4 lbs. pull, 2 pcs. **Part No. 07215**

C Round Base Magnet, 15 lbs. pull . . **Part No. 07216**

D Round Base Magnet, 25 lbs. pull . . **Part No. 07217**

HEAVY DUTY MAGNETIC BASES can suspend heavy items such as vehicle safety lights and signs. Also useful for in-store P.O.P. and signage.

E Heavy Duty Base Magnet, 65 lbs. pull. **Part No. 07222**

F Heavy Duty Base Magnet, 95 lbs. pull. **Part No. 07223**

MAGNETIC HANDY CLIPS™ are strong enough to keep those important lists, memos and letters from sliding out of sight. Avoid the frustration of weaker magnets. A must for any shop, home or office.

G Magnetic Handy Clips™, 2 pcs. **IC** **Part No. 07219**

HANDI-HOOK™ has unlimited shop uses and lifts up to 20 lbs. in a vertical test. Includes a special liner to prevent surface scratches. Perfect for hanging a drop light underneath an auto hood, as well as keys, tools, utensils and more from any ferrous metal surface.

H Handi-Hook™ **IC** **Part No. 07218**

WHITE MAGNETIC HOOKS Coated with white enamel paint, these hooks are versatile for shop, office, school and home. Great for hanging tools, utensils, accessories and more.

I 9 lbs. pull strength, 2 pcs. . . . **IC** **Part No. 07290**

J 14 lbs. pull strength, 2 pcs. . . **IC** **Part No. 07291**

IC = recommended impulse buy

C = item available in a clip strip



HARDWARE/HAND TOOLS



A



MAGNETIC BULK LIFTER This powerful magnet lifts up to 13 lbs! 3½" dia. x 8¾" high. Pick up and transfer nails, screws, nuts or any small metal objects, then pull the handle to release them in the desired location. Heavy duty canister is lightweight and features an easy-to-grip handle.

A *Magnetic Bulk Lifter* **Part No. 07252**



B



HANDY MAG™ This handy magnet holds small hardware – nails, screws, wire nuts and more – securely and conveniently. Sturdy clip easily attaches to belt or pocket. Great for mechanics, carpenters, electricians and do-it-yourselfers.

B *Handy Mag™* **Part No. 07221**



C

FLEXIBLE MAGNETIC SHAPES Thirty geometric high-energy flexible magnets with magnetism on both sides are useful for posting messages on work or tracking boards. Each package contains ten of each shape: circle, triangle and square.

C *Flexible Magnetic Shapes, 30 pcs.* **Part No. 07257**



D



E



F



G

CLASSIC HORSESHOE MAGNET is the universal symbol of magnets recognized around the world. This ideal impulse buy includes keeper to retain magnetic power. 2" tall, lifts 3 lbs.

D *Red Alnico Horseshoe Magnet* **Part No. 07225**

ALNICO HORSESHOE MAGNETS Versatile and powerful! Compact packaging has a small footprint in your display. Each includes steel keeper to retain magnetic strength.

E *30 lb. pull Alnico Horseshoe Magnet* **Part No. 07272**

F *22 lb. pull Alnico Horseshoe Magnet* **Part No. 07271**

G *13 lb. pull Alnico Horseshoe Magnet* **Part No. 07270**



H

I

J



ALNICO BUTTON MAGNETS Powerful alnico magnets have convenient mounting holes. Each includes metal keeper to retain magnetic strength.

H *1.5 lbs. pull, 0.5" diameter* **Part No. 07258**

I *4 lbs. pull, 0.75" diameter* **Part No. 07259**

J *6 lbs. pull, 1" diameter* **Part No. 07260**

TELESCOPING PICKUP/POINTER can be used to retrieve items from hard-to-reach places. The Pickup/Pointer extends to 25" and has a powerful neodymium magnet in the tip. It lifts up to 3 lbs!

A *Magnetic Pickup/Pointer* **Part No. 07228**

B *Counter Display with 12 Magnetic Pickup/Pointers* **Part No. 07228DSP**

BEND-IT MAGNET with powerful neodymium tip is 19" long and can be bent to reach almost any location.

C *Bend-It Magnet* **Part No. 07229**

POCKET PICKUP MAGNET WITH POCKET CLIP

Great impulse buy at hardware and automotive retail stores. The neodymium magnet in this tool will lift up to 2 lbs. Includes convenient pocket clip.

D *Pocket Pickup Magnet* **Part No. 07264**

TELESCOPING PICKUP TOOLS WITH LOCKING HINGE

have sturdy body, grip handle, and extend to 14" and 24" respectively. Both have neodymium magnetic tip, the strongest magnetic material available. Adjustable locking hinge allows an unusual angle necessary for object retrieval.

E *Telescoping Pickup Tool* **Part No. 07256**

F *Extra Long Telescoping Pickup Tool* **Part No. 07227**

FLEXIBLE OR RIGID PICKUP MAGNET features a neodymium magnet that can pick up heavy tools, nuts, bolts and other items that are out of reach. 18 inches not long enough? Extend the tool to a full 34"!

G *Flexible or Rigid Pickup Magnet* **Part No. 07269**

SCREWDRIVER MAGNETIZER/DEMAGNETIZER

Quickly and easily magnetize small tools to keep those screws and nuts in position. Insert a screwdriver or nutdriver into the hole, pull it out and it's magnetized! Leave the magnetizer on the tool for extra strength. To demagnetize, pass the tool through one of the exterior channels. Perfect for do-it-yourselfers, mechanics and carpenters.

H *Magnetizer/Demagnetizer* **Part No. 07224**

I *Magnetizer/Demagnetizer in transparent countertop bin, 35 pieces* **Part No. 07224BIN**

i = recommended impulse buy

c = item available in a clip strip

